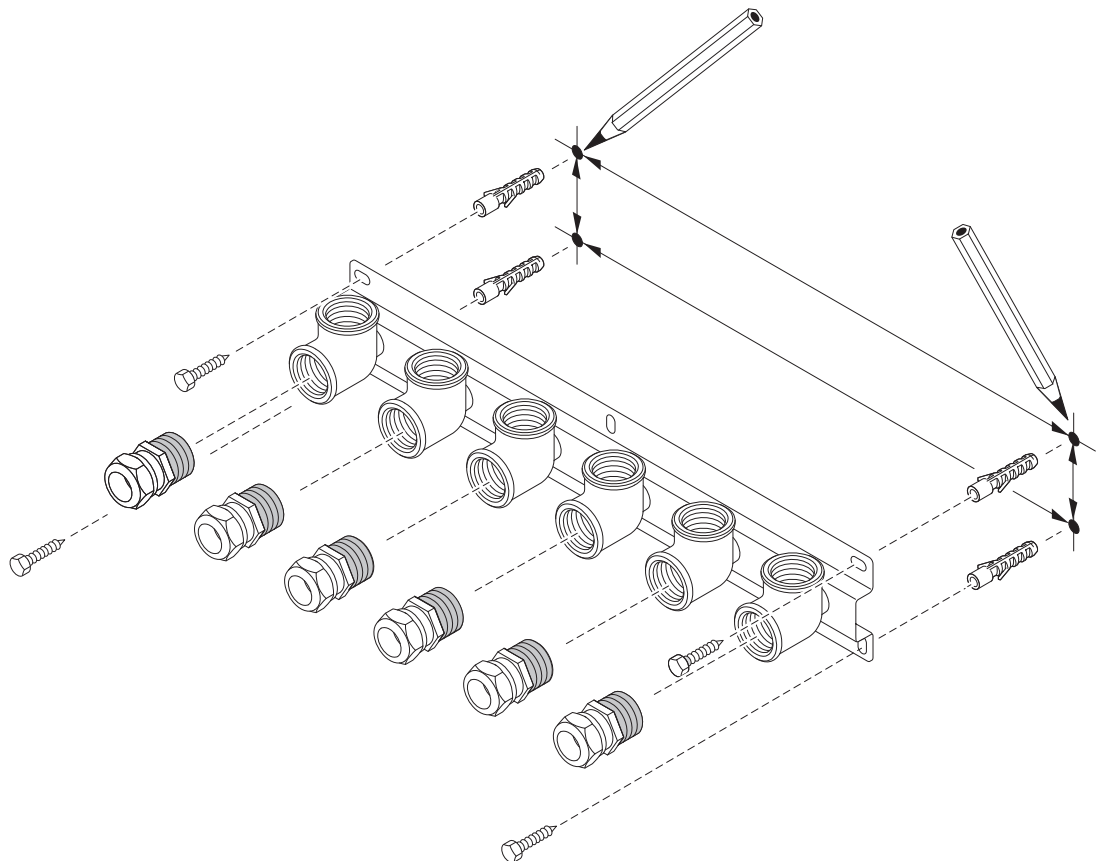
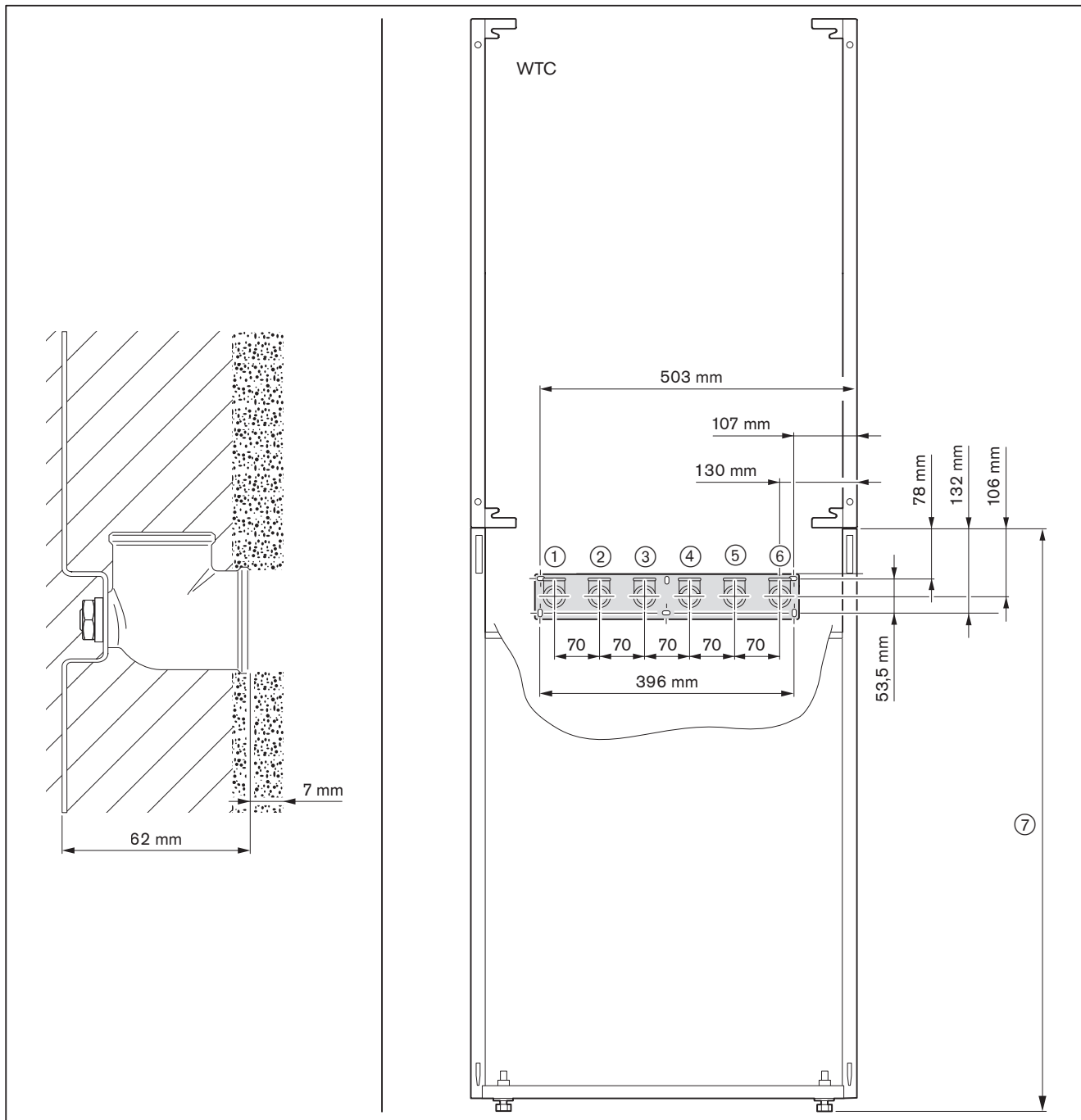


–weishaupt–

manual

Montageanleitung





① Vorlauf Heizkreis Rp^{3/4}

② Warmwasser Rp^{3/4}

③ Gasversorgung Rp^{3/4}

④ Trinkwasser Rp^{3/4}

⑤ Rücklauf Heizkreis Rp^{3/4}

⑥ Zirkulation Rp^{3/4} (Zubehör)

⑦ Trinkwasserspeicher

– WAS 100: 911 mm⁽¹⁾

– WAS 80 Power: 761 mm⁽¹⁾

– WAS 115 Power: 911 mm⁽¹⁾

Socket

– S20: 214 mm⁽¹⁾

– S40: 412 mm⁽¹⁾

⁽¹⁾ + 0 ... 20 mm Fußschrauben-Einstellbereich